



Editor, Patsy Whitehead, CCC

Featured above: Nolin RECC Account Supervisor Sara Stull, 9 years of service

## News you can use

# Nolin Honors WWII Veterans

## Hodgenville member wins seat on Touchstone Energy Honor Flight

It was one of the most emotionally rewarding days of their lives. That's what World War II veterans said about their Oct. 22 Honor Flight to Washington, D.C., which was sponsored by Nolin RECC and Kentucky's Touchstone Energy Cooperatives.

Nolin and 15 other Kentucky electric cooperatives joined with the Bluegrass Chapter of the Honor Flight Network to take 29 veterans, free of charge, to visit the World War II Memorial and other war monuments.

All Nolin members who are World War II veterans were invited to enter a drawing for a chance to win a seat on the Touchstone Energy Honor Flight. Luck was with Robert K. Vance of Hodgenville as his name was pulled randomly from 12 others who entered the drawing.

Vance and other former soldiers, marines, and sailors were treated like the heroes they are during the one-day trip.

When they arrived at Louisville International Airport about 5:30 a.m., they were greeted by the warm smiles of their volunteer escorts and other grateful citizens.

When they landed at Baltimore International Airport later that morning, they were met by hundreds more well-wishers, including 65 midshipmen from the U.S. Naval Academy.

"The entire day was really great, and I was amazed at the organization and work that went into this trip," said former U.S. Army Staff Sergeant Vance. "I am so grateful for the opportunity to travel to Washington and see all the memorials. I especially felt moved at the Iwo Jima Memorial."

Vance, who turned 92 in November, served in the U.S. Army Air Transport Command (ATC) from March 1942 through September 1945. "I was a load master during World War II," says Vance. "We loaded air craft with everything from gas cans to prisoners of war."

The veterans traveled from Baltimore to Washington in a chartered bus. As the day progressed, their stories poured out.

"As we were visiting the World War II Memorial, I got to meet and talk with Senator Dole," says Vance. "You know he is a World War II veteran also – it was great to visit with him and share war stories."

After Vance returned home from the war, he farmed about 120 acres in LaRue County. Later he went to work as a rural mail carrier for the Hodgenville Post Office and retired after 22 years. He and his late wife,

Dorothy Irene (Wilson) were married for 61 years. He says, "She was a great one, and we have three daughters and one son who are also great." He sold all but 10 acres and his home and still lives there today.

On the flight home, the vets received a "mail call" of letters from their families, employees from Kentucky's Touchstone Energy Cooperatives, and others thanking them for their sacrifices. According to Vance he received more letters and cards than anyone on the plane.

When they arrived in Louisville at 8:40 p.m., they were met by another huge, cheering crowd.

We owe all veterans a profound debt. Nolin is honored to have had the opportunity to say, in one small way, "thank you."

As we celebrate the holidays, let's keep in mind those who have so courageously defended our freedom and those who continue to do so. From all of us here at Nolin, we wish you and your family abundant joy and peace during this holiday season.



Robert Vance of Hodgenville is greeted by cadets from the U.S. Naval Academy upon his arrival at Baltimore International Airport. His guardian was Sally Clopton of Hodgenville. Photo by Tim Webb.

CELEBRATE the INTERNATIONAL  
YEAR of COOPERATIVES!



"Cooperative Enterprises Build a Better World"

Turn to page 26G to find out how you could win a \$100 bill credit!

### On the inside...

Ceiling fan debate .....	26B
Generator safety .....	26F
Win \$100 bill credit .....	26G

# Which Way Does your Fan Turn?

Ceiling fan debates become hot topics for discussion

**How often have you heard your spouse or children say the ceiling fan makes them cold in the winter? Does your family go around the house and turn off the ceiling fans? Could it be you have the wrong setting on your ceiling fan?**

There is a lot of debate about the correct settings on ceiling fans. Some people say in the summer the air should blow toward the ceiling and in the winter the blades should be blowing air downward so the warm air that rises to the ceiling can be re-circulated back into the room.

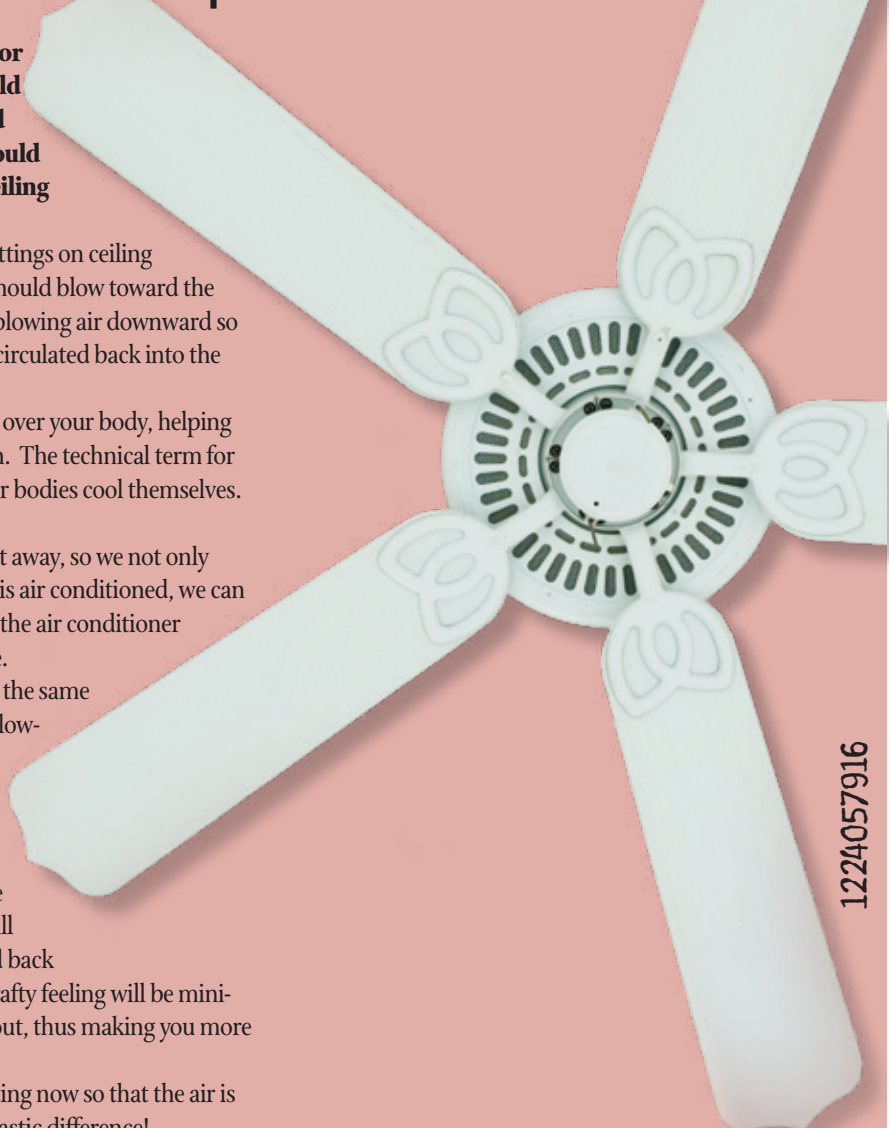
Fans cool you in the summer by moving air over your body, helping increase evaporation of moisture from the skin. The technical term for this is "sweating," which is the primary way our bodies cool themselves. When we sweat, excess heat gets carried away.

Air moving over our bodies also carries heat away, so we not only feel cooler, we actually are cooler. If the house is air conditioned, we can turn the thermostat up a couple of degrees, so the air conditioner will run less, and we will be just as comfortable.

In the winter, air blowing on your body has the same effect as in the summer – it will cool you. So, blowing air down is probably not a good idea. It will more than likely cause you to crank up the thermostat on the heater in order to be comfortable.

In the winter, set your ceiling fan so that the blades will force air toward the ceiling. This will create a warm circulation around the walls and back down into the living area of the room. That drafty feeling will be minimized and your room temperatures will even out, thus making you more comfortable.

Go ahead, switch your ceiling fan blade setting now so that the air is blowing up and away from you – feel the FANtastic difference!



1224057916

## Holiday Savings

During the holiday season, consider using ENERGY STAR-qualified lights and strands to decorate. They use 70 percent less energy than regular lights and last up to 10 times as long. They also give off less heat, reducing the risk of fire.

*Source: U.S. Environmental Protection Agency (ENERGY STAR)*



# Hidden energy-waster? The water heater

One of the biggest energy guzzlers in your home is the water heater. Even if yours seems to work fine, it might be worth your while to replace it with a model built after 2004, when the federal government released new efficiency standards for water heaters.

But act quickly: you might qualify for a tax credit of up to \$300 for buying an electric heat pump water heater with an energy factor of about 2.0. Check with your accountant to see if you're eligible for the credit.

To get the most energy-efficient performance out of your water heater:

- Drain a bucket of water out of the bottom of the heater twice a year. The bottom can fill with sediment, which separates water from the heating element.
- Invest in an inexpensive water

heater blanket or insulation kit, especially for older heaters. Do not insulate over doors or vents.

- Before buying a new water heater, estimate your family's needs. A family of up to four should buy a 30 to 50 gallon tank, while up to seven people might require 50 to 80 gallons. Consider appliances such as hot tubs when calculating how much hot water you use, and consult a plumber for help.

- If your house is more than two levels or if the bathrooms, kitchen, and laundry room are spaced far apart, it might be more efficient to invest in a smaller water heater for each level.

- Set the water heater's temperature at 120 degrees or lower. This prevents scalding and standby heat loss, and can lower your water heating bill by 10 percent.



- Insulate hot water supply pipes to reduce heat loss.

## Space heaters are energy hogs

If you use a space heater in your home, please be aware of two key issues. Using a space heater can cause a significant increase in your monthly bill. Also, many house fires that occur each winter are caused by improper use of space heaters.

A typical portable electric space heater consumes anywhere from 1,000 to 1,500 watts per hour.

Running a space heater day and night will substantially increase your energy costs. For example, a 1,000-



watt space heater operating 12 hours per day at a cost of 10 cents per kilowatt-hour will add more than \$36 to your monthly electric bill.

If you use a 1,500-watt space heater for the same amount of time, your bill would jump more than \$54 each month.

To stay safe, make sure the unit is equipped with automatic shut-off features and heating element guards.

Finally, never leave space heaters unattended. Turn off or unplug the unit before leaving the room or going to bed.

Connecting to

# safety

a message from Nolin RECC

## Avoid a Holiday Decorating Disaster

Few traditions are as unique to the holidays as decorating our homes and yards with twinkling lights and bright ornaments. While these displays add to the magic of the season, they also increase our risks for holiday fires and injuries. So follow these steps to ensure that your traditions result in a safe, bright, and happy time for your family.

Carefully inspect each electrical decoration and extension cord before use, and discard any damaged items. Cracked sockets, bare or frayed wires, and loose connections may cause a serious shock or fire. Avoid overloading outlets, which can overheat and also cause a fire.

The Electrical Safety Foundation International recommends never connecting more than three strands of incandescent lights together. Do not pinch cords in windows or doors, or under heavy furniture.

When decorating outside, make sure outdoor outlets are equipped with ground-fault circuit interrupters (GFCIs). Check that all items and extension cords are

marked for outdoor use. And exercise extreme caution when decorating near overhead power lines. Use a wooden or fiberglass ladder instead of metal. Keep yourself and all of your equipment at least 10 feet from power lines.

Take special care with Christmas trees. If purchasing a live tree, check for freshness. Heated rooms dry out live trees—even fresh ones—rapidly. Place the tree at least 3 feet away from all heat sources, including fireplaces and space heaters. Be sure to keep the stand filled with water. For artificial trees, look for the label “fire resistant.”

Decorate your tree, live or artificial, with non-combustible or flame-resistant materials. Never use burning candles on or near your tree.

Whether your house is the most festive on the block or you prefer a more low-key style, make safety an important part of your holiday preparations.

**Source: Electrical Safety Foundation International**



Regularly check your tree for fresh, green needles. Trees that have dried out over several weeks will burn faster than fresh, well-watered trees. Remember to keep your tree watered at all times.

Source: Underwriters Laboratories (UL)



Check to make sure connections are secure and cords are not worn or frayed.

Source: Underwriters Laboratories (UL)

DEATHS

## Capital credits claimed by estates

Members of Nolin RECC earn capital credits based on the amount of electricity consumed. The co-op, unfortunately, has not been in a financial position to pay capital credits to members for the past several years; however, funds can be released to executors or administrators of co-op members' estates at a discounted rate.

The executor or administrator of a member's estate can fill out an application for capital credits. Along with the application, Nolin requires a copy of the death

certificate, and a copy of the court order appointment as executor or administrator.

The deceased member's account must be closed and all final bills paid before the funds for payment paperwork is processed. Applications for capital credits are approved by the Nolin RECC board of directors. After approval, a check for accrued capital credits is mailed to the executor or administrator of the estate.

For more information, please contact Nolin's Membership Records Coordinator Sheree Raub at (270) 765-6153.

116000101

## Cooperative Reliability

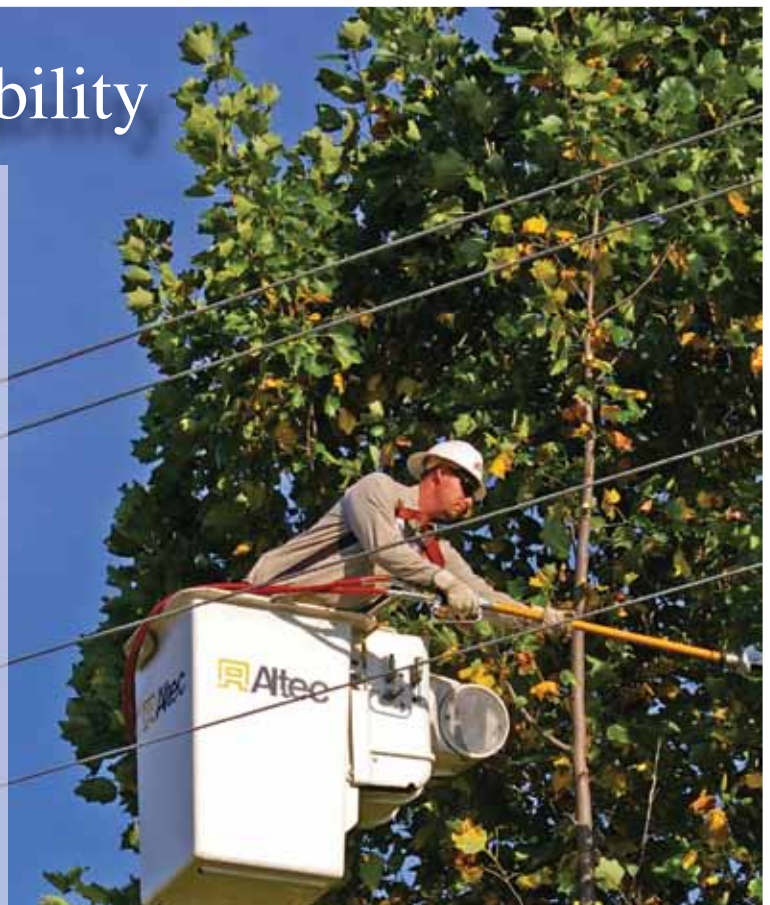
Reliability means keeping your electricity on. Enjoy your holidays knowing that Nolin RECC is working to keep you energized!

Nolin RECC is looking out for you this Christmas and every day of the year by providing you safe and reliable electricity!

**NOLIN**  
Rural Electric Cooperative

A Touchstone Energy Cooperative 

(270) 765-6153 • emergency number: (270) 769-6396  
email: [service@nolinrecc.com](mailto:service@nolinrecc.com) • [www.nolinrecc.com](http://www.nolinrecc.com)





# Don't Generate Danger

When it comes to generator safety, your safest call is to a licensed electrician

**W**hen the power goes out, a portable generator can make life a lot easier. But if it's used improperly, that generator can make life a lot more dangerous!

Always have a licensed electrician hook up the standby electrical system and portable generator to your home. Your electrician can determine the proper size generator required to meet your individual needs.

Keep these tips in mind when you're using a portable generator:

- Plug individual appliances into the generator using heavy-duty, outdoor-rated cords with a wire gauge adequate for the appliance load.
- Observe the generator manufacturer's instructions for safe operations.
- Do not plug the generator into a wall outlet.
- Never use a generator indoors or in attached garages.
- Only operate the generator outdoors in a well-ventilated dry area, away from air intakes to the home, and protected from direct exposure to rain and snow, preferably under a canopy, open shed, or carport.
- The generator cannot be connected directly to the housing wiring. Regardless of generator size, you must contact a licensed electrician to install a generator transfer switch and to hook up the generator. This will protect your cooperative's workers from being shocked by power from your generator while doing repairs to the line.
- Never store gasoline in the home. Gasoline, kerosene, and other flammable liquids should be stored outside of living areas in properly labeled, non-glass safety containers. They also should not be stored in an area near a fuel-burning appliance: the vapor from gasoline can travel invisibly along the ground and be ignited by pilot lights or arcs caused by activating electric switches.

For code compliance on portable generators, contact Nolin RECC at **(270) 765-6153** e-mail [comments@nolinrecc.com](mailto:comments@nolinrecc.com), or visit our Web site at [www.nolinrecc.com](http://www.nolinrecc.com).

**NOLIN**  
Rural Electric Cooperative

A Touchstone Energy<sup>®</sup> Cooperative 

CELEBRATE *the* INTERNATIONAL  
YEAR of COOPERATIVES!



"Cooperative  
Enterprises Build  
a Better World"

# International Year of Cooperatives May Earn you \$100

Next year has been designated the International Year of Cooperatives by the United Nations. To pay tribute to co-ops, Nolin will post important facts about co-ops each month in the *Nolin News*.

A year from now, we will ask Nolin members questions about cooperatives (based on information provided to you in the coming year). Those members answering the most correct questions about co-ops will be entered in a drawing to win a \$100 electric bill credit!

## Here is fact number 1 on co-ops:


The nation's 900-plus electric co-ops:

- Serve about 42 million people in 47 states—that's 18 million businesses, homes, schools, churches, farms, irrigation systems, and other establishments in 2,500 of 3,141 counties.
- Employ 70,000.
- Retire more than \$500 million in capital credits annually.
- Own assets worth \$130 billion.
- Own and maintain 2.5 million miles, or 42 percent, of the nation's electric distribution lines, covering three-quarters of the nation's land mass.

*(Clip and save this information for the International Year of Cooperatives contest in December 2012)*

LOVE  
PEACE  
JOY  
HAPPY HOLIDAYS

**NOLIN**  
Rural Electric Cooperative

A Touchstone Energy Cooperative 



## We've Got Your \$25 Number! \$25

WIN \$25 Worth of FREE Electricity

Nolin News features a contest called "We've Got Your Number." Hidden inside this issue are two randomly selected member account numbers. If you spot your account number, contact the Member Services Department at 765-6153, and win a \$25 CREDIT on your electric bill. You must identify your number and call by the 15th day of the month's issue containing your number. Account numbers could be anywhere in your *Nolin News*!

## New Member Credits

All members signing up for new service with Nolin receive a short survey. Members who return the completed survey to Nolin are automatically eligible to win a \$20 credit on their electric bill. Each month, one name is drawn and a lucky Nolin member receives a bill credit on their next statement. Congratulations to our latest winner, **Bryan J. Emerson**, of **Hodgenville**.

## Online payments

Access your Nolin RECC account through our Web site at [www.nolinrecc.com](http://www.nolinrecc.com). Click on "YourAccount" to check your consumption history and make payments by debit card, Visa, or MasterCard. To apply for budget billing and automatic draft online, click on "Residential Bill Payment."

Now Open:

# Christmas Light Displays

Be sure to travel through Freeman Lake Park in Elizabethtown to experience more than 100 lighted Christmas displays. Don't miss the Nolin RECC bucket truck and elf at the entrance of the park. Also visit Christmas at Creekfront in Hodgenville (Hwy. 210 just before you reach the square). Nolin RECC will have a lighted display along with many other Christmas scenes.



## HOLIDAY CLOSINGS

The Nolin RECC offices will be closed December 23 and 26, and January 2, 2012.  
In case of emergency, call (270) 769-6396.  
Long-distance only, call (800) 572-1147.

# Happy Holidays

### HOW TO REACH NOLIN RECC

#### ELIZABETHTOWN OFFICE

411 Ring Road, Elizabethtown, KY 42701-6767  
8:00 a.m.-5:00 p.m., Mon-Fri • (270) 765-6153

#### RADCLIFF OFFICE

101 West Lincoln Trail Blvd., Radcliff, KY 40160  
8:00 a.m.-5:00 p.m., Mon-Fri • (270) 351-2199  
(Office closed from 12:30-1:30 daily)

**TOLL-FREE BUSINESS CALLS** — 1-888-637-4247

**EMERGENCY PHONE NUMBER** — (270) 769-6396

**EMERGENCY TOLL-FREE CALLS** — 1-800-572-1147

Web site: [www.nolinrecc.com](http://www.nolinrecc.com)  
e-mail: [comments@nolinrecc.com](mailto:comments@nolinrecc.com)

### BOARD OF DIRECTORS

David P. Brown  
Gene Straney  
A.L. Rosenberger  
Lawrence Ireland  
Rick Thomas  
Linda Grimes

#### ATTORNEY

John J. Scott

#### President & CEO

Michael L. Miller

**NOLIN**  
RURAL ELECTRIC COOPERATIVE CORPORATION